

DONALD GRANT MITCHELL

AND

HIS

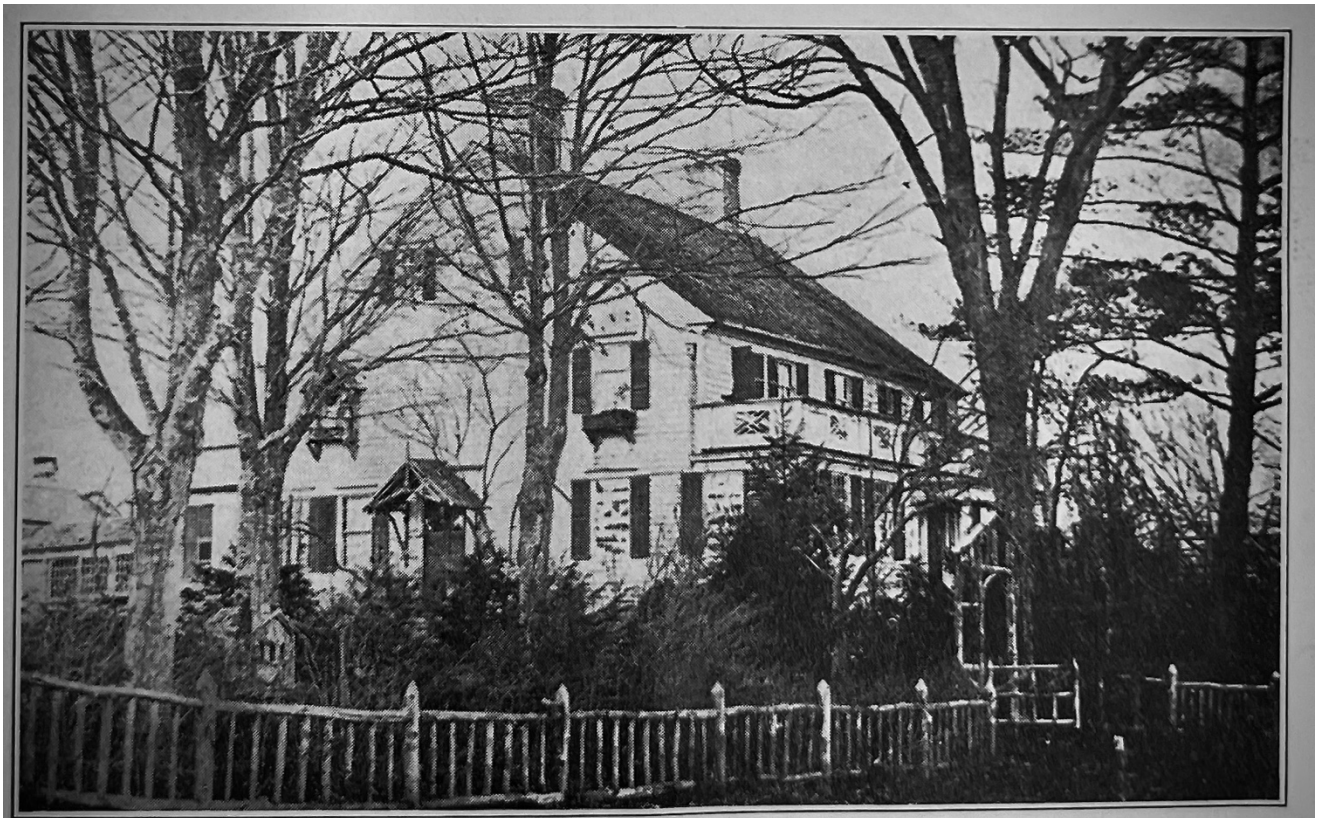
EDGEWOOD FARM

WALKING TOUR

New Haven Preservation Trust  
Barbara Lamb & Aaron Helfand  
Sunday, September 11, 2022



#1: Circa 1855



#2: Original Farmhouse, n.d.



#3: Edgewood homestead, circa 1872



#4: circa 1868



Rockwood Phot.

839 Broadway N.Y.

WEST ROCK & VILLAGE.

#5: West Rock & Village, circa 1868



Rockwood Phot.

839 Broadway N.Y.

NEW FARM HOUSE.

#6: "New" Stone Farmer's Cottage, Circa 1868

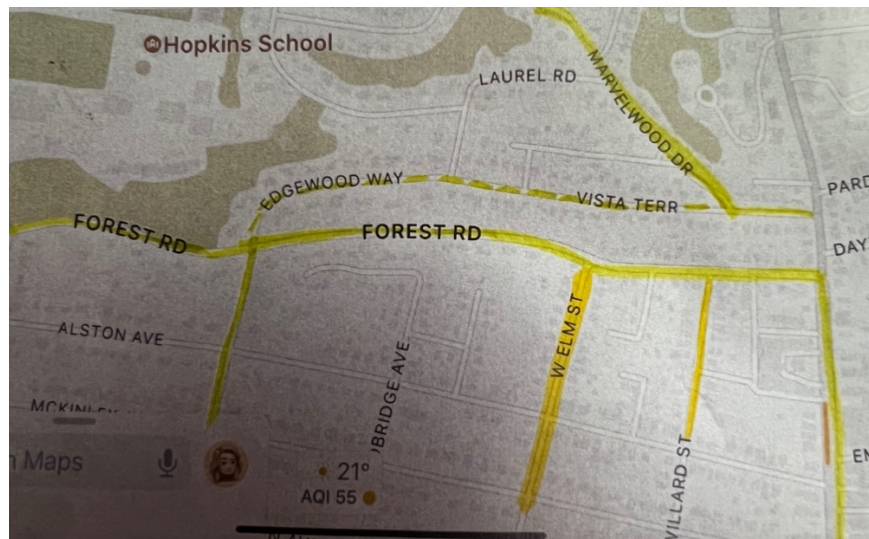


#7: View of Edgewood newer Farmstead from Forest Road, n.d.



#8: View of Farm from hillside looking east toward harbor, c 1868

#9: Portion of DGM hand drawn map of New Haven/Westville and Edgewood Farm, c 1870  
All images from The New Haven Museum & Historical Society



#10 Current map of approximate area, c 2022 from Apple Maps